



# Library Lagniappe

St. Mary Parish Library Newsletter

November-December 2024

[stmaryparishlibrary.org](http://stmaryparishlibrary.org)

Alex P. Allain-Franklin ● Amelia ● Bayou Vista ● Berwick ● Centerville ● Patterson ● West End-Baldwin



## WHAT'S INSIDE

|                               |     |
|-------------------------------|-----|
| Check Out LA State Parks..... | 2   |
| Programs.....                 | 3-9 |
| Book Clubs.....               | 10  |
| Memorials.....                | 11  |



## LIBRARY HOURS

### BAYOU VISTA • BERWICK FRANKLIN • PATTERSON WEST END

|           |                 |
|-----------|-----------------|
| Monday    | 8:30 AM-5:30 PM |
| Tuesday   | 8:30 AM-5:30 PM |
| Wednesday | 8:30 AM-5:30 PM |
| Thursday  | 8:30 AM-5:30 PM |
| Friday    | 8:30 AM-5:30 PM |
| Saturday  | 9:00 AM-1:00 PM |
| Sunday    | Closed          |

### AMELIA

|                 |                 |
|-----------------|-----------------|
| Monday-Friday   | 9:30 AM-5:30 PM |
| Saturday-Sunday | Closed          |

### CENTERVILLE

|                 |                 |
|-----------------|-----------------|
| Monday-Friday   | 9:30 AM-5:30 PM |
| Saturday-Sunday | Closed          |



*Happy Holidays*

FROM ST. MARY PARISH LIBRARY

Wishing you a delightful and cheerful holiday season!

### *Thanksgiving*

Closed Thursday, November 28- Saturday November 30.  
Re-opening for business on Monday, December 2.

### *Christmas*

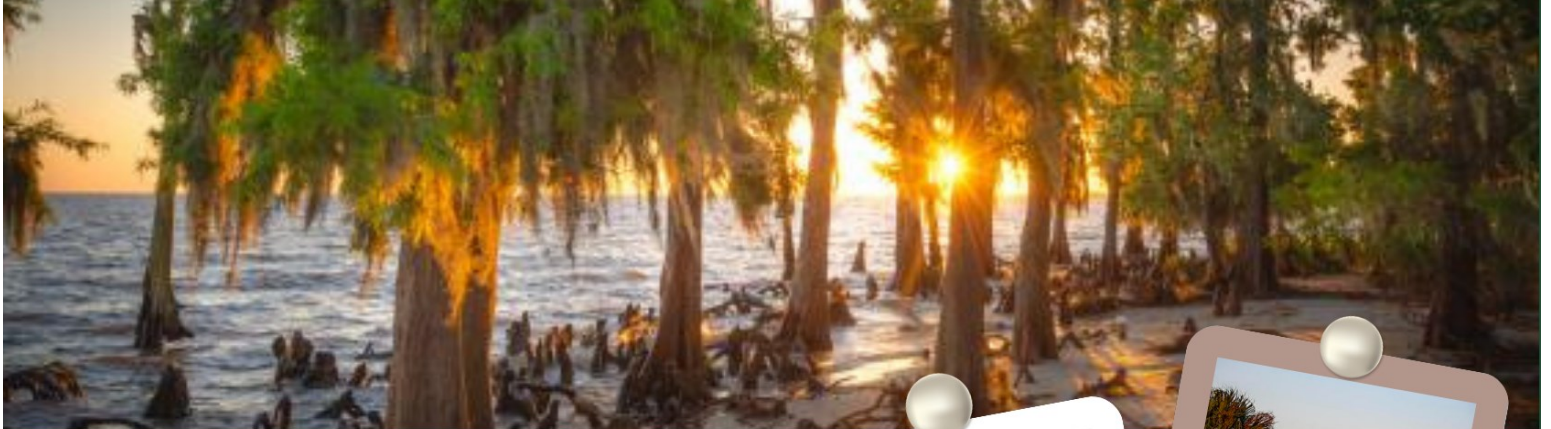
Closed Tuesday, December 24- Thursday December 26.  
Re-opening for business on Friday, December 27.

### *New Year's*

Closed Tuesday, December 31- Wednesday January 1.  
Re-opening for business on Thursday, January 2.



# Check Out Louisiana State Parks



## CHECK OUT LOUISIANA STATE PARKS



The State Library of Louisiana, in partnership with Lt. Governor Billy Nungesser and Louisiana State Parks, has introduced a program named Check Out Louisiana State Parks. This initiative is designed to promote outdoor activities, enhance environmental education, and encourage community involvement with public resources. Patrons have the opportunity to uncover the beauty and history of Louisiana by borrowing a state park pass along with a backpack for their explorations.

### HOW DOES IT WORK?

#### Park Access:

- Ticket grants one-day access to 21 parks/16 historic sites in Louisiana.
- Present to ranger for entry; valid once daily per site per family.
- Does not include amenities like cabins or RV lots; no overnight stays.

#### Library Restrictions:

- Pass can be checked out once every six months by patron/family.
- No holds; available first-come, first-served.
- Does not need to return to the library.

### GEAUX EXPLORE BACKPACK

Each St. Mary Parish Library branch offers one backpack for a 7-day checkout period, not renewable and without holds.

#### The backpack includes:

- Binoculars
- Three guides: Louisiana Trees and Wildflowers, Louisiana Birds, Louisiana Wildlife.
- Leave No Trace guides
- Compass
- Magnifying glass
- Full replacement cost: \$60





# Children's Programs

## Amelia Branch

Temporarily Closed

Amelia Branch is undergoing facility maintenance due to storm damage, and is closed until further notice. Once we've developed a timeline, the library will announce the expected reopening date.



Bayou Vista Branch

985-399-9866

## 4th Grade & Up

Thursday, November 7

Altoid Tin Wallets

9:00-5:00 PM

Create a custom tin wallet for a fun and fashionable way to reflect your style! 4th Grade & Up.

Friday, November 22

Crystal Stone Necklace

9:00 AM-5:00 PM

Create a personalized necklace by combining wire and stones to craft a unique piece of wearable art. 4th Grade & Up.

Friday, December 13

Gift Wrap & Chill

3:30-5:00 PM

Enjoy the company of others at our holiday gift wrapping workshop with hot chocolate and a festive movie! 4th Grade & Up.

## All Ages

Friday, November 15

Taylor Swift Era's Night

6:00 PM

Join us for Era's Night, a special event where Swifties come together to celebrate their love for Taylor Swift! Connect with fellow fans while enjoying a viewing of the tour, create friendship bracelets, and come dressed as your favorite Era! All Ages.

Saturday, November 23

Pinch Pots

10:00 AM

Unleash your creativity creating your own clay pot! Mold it into your desired shape, add your unique colors, and enjoy the process! All Ages.

Saturday, December 7

Gnome Ornaments

10:00 AM

Add a touch of whimsy and magic to your holiday decor by crafting gnome ornaments. All Ages.

Thursday, December 12

Puzzle Piece Trees

9:00 AM-5:00 PM

Use puzzle pieces to create a charming holiday tree ornament or decoration. All Ages.

Friday, December 20

Holiday Party

9:00 AM-5:00 PM

Drop in throughout the day to enjoy Christmas games, create reindeer food, and watch your favorite holiday classics! All Ages.



## Outreach Services

The St. Mary Parish Library's Outreach team provides library services to organizations within St. Mary Parish Library, including library card signup, book delivery, craft and STEM programs, informational presentations, and more! The Outreach team services daycares, Headstart, nursing homes, schools, and correctional facilities.

### Services:

Daycare/Headstart & School Visit Storytimes

Library Tours

Library Services Demonstration

Community Event Booth

Adult Services

### Contact

Outreach Coordinator

337-828-5634

outreach@stmaryparishlibrary.org

St. Mary Parish Library  
206 Iberia St., Franklin, LA 70538



Scan the QR code to access the Outreach Services application.

# Children's Programs

Berwick Branch

985-385-2943



## Performer

Tuesday, December 10

**Lady Chops: Jingle All The Bells & Holiday Celebration**

4:00 PM

Lady Chops is back to celebrate the season with her exciting holiday program, "Here Come the Bells, So Many Bells!" You'll be rockin' the holiday hits during her high energy, interactive one-woman drumming show. Join us as we welcome the season with this fun-filled, family-friendly performance! Enjoy the season by celebrating after the performance with delicious cookies and warm cocoa. All Ages.

## KIN-3rd Grade

Tuesday, November 12

**Paper Plate Minion**

4:00 PM

Craft a minion using paper, markers and glue for a fun afternoon activity. Kin-3rd Grade.

## 4th Grade & Up

Thursday, November 14

**Upcycled Minion Planters**

4:00 PM

Enhance your garden with upcycled minion planters, crafted from repurposed plastic bottles. 4th Grade & Up.

## All Ages

Friday, November 1

**Glowing Day of the Dead Sugar Skull**

4:00 PM

Create a vibrant Day of the Dead sugar skull decoration with simple craft supplies to honor the tradition of Día de los Muertos. All Ages.

Saturday, November 9

**Yay for National Louisiana Day: Gumbo Cooking Contest**

10:30 AM

National Louisiana Day on November 9th celebrates the state's rich culture, particularly its food and music. The Berwick Branch is excited to host a Gumbo Cook-Off, inviting patrons to bring their best Gumbo, with rice provided. Entries start arriving at 10:00 am, tasting begins at 10:30 am, and judging ends at noon, with the winner announced at 12:15 pm. Attendees are reminded to consider food allergies when tasting dishes. Ca C'est Bon! All Ages.

Monday, November 11

**Minion Tissue Art**

4:00 PM

Turn a simple canvas into a vibrant Minion masterpiece using a pre-stenciled canvas and tissue paper. All Ages.

Wednesday, November 13

**Minion Family Story Night**

6:00 PM

Families, get ready for a "Minion Things To Be Thankful For" family story night, featuring a fun story and a tasty edible craft! All Ages.

Monday, November 25

**Friday, December 13**

**Word Bingo**

4:00 PM

Monday, December 16

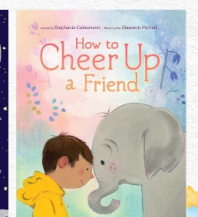
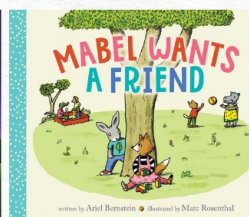
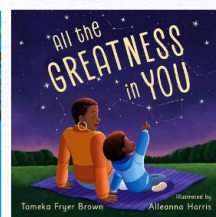
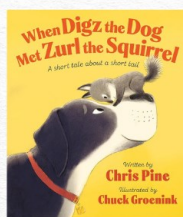
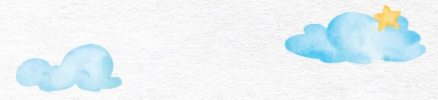
**Wooden Ornament**

4:00 PM

Transform a wooden circle into a charming ornament by painting it and adding ribbon embellishments to enhance your decorations. All Ages.

## Picture Books

NEW & UPCOMING TITLES





# Children's Programs

Centerville Branch  337-836-1717

## All Ages

**Tuesday, November 5**

**Thanksgiving Slime** 3:30 PM

Gobble, google with our super easy-to-make homemade Thanksgiving slime recipe. All Ages.

**Thursday, November 14**

**Thanksgiving Bingo** 3:30 PM

**Wednesday, November 20**

**Pine Cone Owl** 3:30 PM

Transform a pine cone into a charming snowy owl! With just a few basic supplies and a sprinkle of creativity, you can bring these delightful creatures to life. All Ages.

**Tuesday, December 3**

**Holiday Slime** 3:30 PM

Get in the holiday spirit this season with this easy to make red and green slime! All Ages.

**Thursday, December 12**

**Holiday Pasta Tree** 3:30 PM

Make a holiday tree shape with dried pasta noodles and decorate it with colorful buttons, pom poms, or rhinestones. All Ages.

**Thursday, December 19**

**Holiday Bingo** 3:30 PM

Franklin Library  337-828-5364

## Performer

**Monday, December 9**

**Lady Chops: Jingle All the Bells** 4:00 PM

Lady Chops is back to celebrate the season with her exciting holiday program, "Here Come the Bells, So Many Bells!" You'll be rockin' the holiday hits during her high energy, interactive one-woman drumming show. Join us as we welcome the season with this fun-filled, family-friendly performance! All Ages.

## All Ages

**Wednesday, November 6**

**Turkey Play Doh** 4:15 PM

Create your own playdough using common household ingredients for sensory play! Once ready, let your creativity shine by shaping it into animals, letters, or anything your imagination inspires. All Ages.

**Monday-Wednesday, November 25-27**

**Craftsgiving Buffet** 10:15-4:15 PM

We have a buffet of crafts for you in preparation for Thanksgiving! From creating handprint turkeys to crafting personalized cards, there's something for everyone to enjoy. All Ages.

**Wednesday, December 11** *\*Registration Required\**

**Holiday Cookies with Santa:  
Storytime & Cookie Decorating Workshop** 6:00 PM

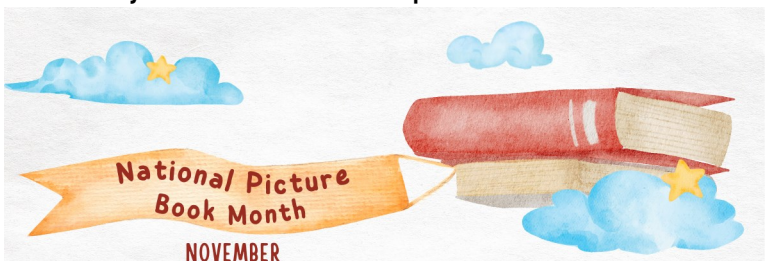
'Tis the season to spread joy! Come and celebrate with us at a delightful holiday story time and cookie-decorating extravaganza! Get creative as you decorate festive cookies and a special surprise guest from the North Pole will be stopping by to assist! Please register to participate in the cookie workshop. All Ages.

## 7th Grade & Up

**Wednesday, November 20**

**Wednesday, December 4**  
**Dungeons & Dragons: Epic Quest** 4:15 PM

Dungeons & Dragons is a tabletop role-playing game where players create characters, gain experience, and navigate a fantasy world led by a Dungeon Master. Both campaign groups are currently full. 7th Grade & Up.



Join St. Mary Parish Library in celebrating National Picture Book Month! It's a time to honor childhood books that aid in learning and growth, featuring classic and new characters with beautiful illustrations.

# Children's Programs

*Patterson Branch*

985-395-2777

## KIN & Up

Wednesday, November 6

Tuesday, December 10

**Library LEGO Club**

4:00 PM

Get ready to take on exciting LEGO challenges or build whatever you dream up! Drop by our LEGO Club for some hands-on fun and bring your ideas to life—one brick at a time. Kin & Up.

## All Ages

Thursday, November 14

**Pickle Palooza**

4:00 PM

Explore, taste, and create at our Pickle Palooza! Join us for the TikTok Pickle Challenge where National Pickle Day is a Big Dill! All Ages.

Tuesday, November 19

Tuesday, December 17

**Pokémon Club**

4:00 PM

The club engages in trading Pokémon cards, battling with other members using video games or cards, organizing tournaments, cosplay contests and movie nights. All Ages.

Wednesday, November 27

Wednesday, December 18

**Word & Picture Bingo**

4:00 PM

Tuesday, December 3

**Holiday Carnival**

5:30 PM

Enjoy a holiday carnival with games, crafts, a photo booth, hot cocoa and cookies! All Ages.

Thursday, December 12

**Holiday Tree Ice Cream Cones**

4:00 PM

Give the classic ice cream cone a holiday twist with a touch of green frosting, colorful sprinkles, and your favorite candies for a festive treat. All Ages.

Friday, December 20

**The Movie Showing: The Polar Express (G)**

3:30 PM

*West End Branch*

337-923-6205

## All Ages

Tuesday, November 5

**Cactus Rock Painting**

2:00-5:00 PM

Transform an ordinary rock into a colorful pet rock cactus by adding bright colors, and eyes! All Ages.

Wednesday, November 13

**Rubber Band Bracelet**

2:00-5:00 PM

Make a loom bracelet with rubber bands, personalizing it to showcase your style! All Ages.

Thursday, November 21

**Mod Podge Lanterns**

2:00-5:00 PM

Create a beautiful fall lantern to embrace the spirit of Thanksgiving. All Ages.

Tuesday, November 26

**Scarecrow Pots**

2:00-5:00 PM

Craft a terracotta pot scarecrow to add a charming touch to your fall decorations. All Ages.

Tuesday, December 10

**Popsicle Birdhouses**

2:00-5:00 PM

Craft a birdhouse with popsicle sticks and watch as birds flock to their charming new home! All Ages.

Thursday, December 12

**Hanging Succulents**

2:00-5:00 PM

Enhance your room's decor with this charming hanging succulent plant. All Ages.

Wednesday, December 18

**Holiday Party**

9:00 AM-5:00 PM

Join us for a holiday party featuring games, cookie decorating, and a special visit from Santa from 4-5 PM! All Ages.

## 4th Grade & Up

Tuesday, November 19

**Wreath Making**

2:00-5:00 PM

Join us to create a beautiful new wreath to display on your door this fall! 4th Grade & Up.

Wednesday, December 4

**DIY Sugar Scrub**

4:00 PM

Indulge your skin with a homemade sugar scrub, the perfect gift for loved ones! 4th Grade & Up.



# Children's Story Times

## BAYOU VISTA BRANCH

TODDLER TIME  
TUESDAYS 10:30 AM



**November 5-Sly Fox**

Story: *How to Find a Fox*

Activity: Paper plate fox



**November 12-"Orange" You Glad It's Storytime**

Story: *Where Is Tippy Toes?*

Activity: Tiger painting in a bag

**November 19-Being Thankful**

THANKFUL

Story: *Bear Says Thanks*

Activity: Handprint thank you cards

**November 26-Thanksgiving Time**

Story: *I'm a Turkey*

Activity: Keepsake handprint leaf napkins

**December 3-Warm & Cozy**

Story: *A Christmas Sweater for Nina*

Activity: Hot cocoa mug



**December 10-Holiday Trees**

Story: *Emily's Perfect Christmas Tree*

Activity: Clothespin and jewel tree

**December 17-Happy Holidays**

Story: *Merry Christmas, Red Truck*

Activity: Popsicle stick bell ornament



## PATTERSON BRANCH

TODDLER TIME  
MONDAYS 10:00 AM



**November 4-Day of the Dead**

Story: *Gustavo, the Shy Ghost*

Activity: Make a sugar skull mask



**November 11-Celebrate Our Veterans**

Story: *Veterans: Heroes in Our Neighborhood*

Activity: Create a bald eagle

**November 18-Who Swallowed the Turkey**

Story: *There Was an Old Lady Who Swallowed a Turkey!*

Activity: Turkey hats



**November 25-Fluffy Buffalo**

Story: *Buffalo Fluffalo*

Activity: Buffalo craft

**December 2- Grumpy Puppy**

Story: *Merry Christmas, Gus*

Activity: Design a holiday sweater



**December 9-Candy Canes**

Story: *The Candies Save Christmas*

Activity: Decorate candy canes

**December 16-My Holiday Cookie**

Story: *You're My Little Christmas Cookie*

Activity: Decorate a cookie

**December 23- The Grinch**

Story: *How the Grinch Stole Christmas!*

Activity: Make a Grinch face with Max



**December 30- Stop the Pigeon**

Story: *Don't Let the Pigeon Drive the Sleigh!*

Activity: Pigeon puppet



## BERWICK BRANCH

TODDLER TIME  
WEDNESDAYS 10:30 AM



**November 6-Cute As Pie**

Story: *You're My Little Cutie Pie*

Activity: Felt pie art



**November 13-Thanks, a Minion!**

Story: *The Three Little Minions*

Activity: Disguise a Turkey

**November 20-Run, Turkey, Run!**

Story: *Run, Turkey, Run!*

Activity: Paper bag turkey



**December 4-Time for Tinsel**

Story: *Merry Christmas from The Very Hungry Caterpillar*

Activity: Holiday caterpillar

**December 11-Jolly Jingle Bells**

Story: *Llama Llama Jingle Bells*

Activity: Jingle bell tree ornament



**December 18-Reindeer Ready**

Story: *The Itsy-Bitsy Reindeer*

Activity: Santa's sleigh

BABY CLAP & Tap

0-18 Months Story Time  
Fridays and Saturdays 11:00 AM  
Berwick Branch

Friday, November 22 | Saturday, November 23  
Friday, December 27 | Saturday, December 28

TODDLER Time

St. Mary Parish Library offers story time each week for infants-age four and their caregivers at several locations. Story time encourages social and early literacy skill development by incorporating singing, dancing, and engaging storytelling. Toddlers participate in rhymes, open-ended art, and finger plays in a fun, interactive setting.

## FRANKLIN LIBRARY

TODDLER TIME  
FRIDAYS 10:30 AM



**November 1-Turkey Time**

Story: *10 Fat Turkeys*

Activity: Turkey art



**November 15-There Was an Old Lady**

Story: *There Was an Old Lady Who Swallowed a Turkey!*

Activity: Thanksgiving banner



**November 22-Thankful for Thanksgiving**

Story: *Run, Turkey, Run!*

Activity: Paper plate pumpkin pie

**December 6-FA, LA, LA,LA**

Story: *I Got the Christmas Spirit*

Activity: Ornament wreath



**December 13-Holiday Tree**

Story: *Decorate the Tree*

Activity: Foam tree ornament

**December 20-I Spy Santa's Cookies**

Story: *Santa's Cookie Is Missing!*

Activity: Santa's cookie placemat



## WEST END BRANCH

TODDLER TIME  
MONDAYS 10:00 AM



**November 4-Fall**

Story: *I Am a Leaf*

Activity: Paper trees



**November 11-All Around the World**

Story: *We've Got the Whole World in Our Hands*

Activity: Handprint flowers

**November 18-Woodland Creatures**

Story: *Bear & Squirrel are Friends*

Activity: Fall wreaths



**November 25-Thanksgiving**

Story: *The Very Stuffed Turkey*

Activity: Thanksgiving turkey hat

**December 2-Reindeer**

Story: *Rudolph's Adventure*

Activity: Reindeer plates



**December 9-Holiday Tree**

Story: *Oh, Christmas Tree!*

Activity: Paperplate holiday trees

**December 16-Santa**

Story: *Santa's New Suit*

Activity: Santa paint brush ornaments

**December 23-Snowman**

Story: *Frosty the Snowman*

Activity: Popsicle stick snowman



**December 30-Happy New Year**

Story: *Happy New Year, Spot!*

Activity: Handprint art



HAPPY new year

# Adult Programs

*Bayou Vista Branch*  985-399-9866

**Saturday, November 9**  
**Pumpkin Glass Candle Holders** 10:00 AM  
Transform a wine glass into a pumpkin-shaped candle holder for a charming fall decoration that enhances your mantle or centerpiece. Adults.

**Monday, November 18**  
**ALSC Justice Bus** 9:00 AM-12:00 PM  
Stop and tour the Justice Bus for a legal presentation on housing issues. Adults.

**Saturday, December 21**  
**Pressed Flower Candles** 10:00 AM  
Create pressed flower candles using dried leaves and flowers to add cozy seasonal accents. Adults.

*Berwick Branch*  985-385-2943

**Saturday, November 2**  
**Fall Door Hanger** 11:00 AM  
Celebrate the autumn season by creating a cheerful fall welcome sign with a wooden circle, stencils, and ribbons. Adults.

**Tuesday, November 5,12,19,26**  
**Tuesday, December 3,10,17**  
**Calm Coloring** 1:45 PM  
Coloring can be an effective way to relax, unwind, and even improve your mental wellbeing. Join us each Tuesday for our adult coloring sessions and experience the benefits for yourself. Adults.

**Tuesday, November 12**  
**ALSC Justice Bus** 1:00-3:00 PM  
Stop and tour the Justice Bus for a legal presentation on housing issues. Adults.

**Saturday, December 7**  
**Glass Bottle Luminaries** 11:00 AM  
Add a touch of charm to any space by transforming recycled bottles into bright luminaries. Adults.

*Centerville Branch*  337-836-1717

**Wednesday, November 6**  
**Rag Wreath** 10:30 AM  
Create a colorful rag wreath, a charming handmade touch to your decor that suits any season or occasion. Adults.

**Tuesday, November 12**  
**Tuesday, December 10**  
**Adult Coloring** 10:30 AM  
Adult coloring is an easy and enjoyable way to unwind and tap into your creative side. Adults.

**Monday, November 18**  
**ALSC Justice Bus** 1:00-3:00 PM  
Stop and tour the Justice Bus for a legal presentation on housing issues. Adults.

**Wednesday, December 4**  
**Decoupage Plate** 10:30 AM  
Design a plate to enhance your table setting or to give as a thoughtful gift with this enjoyable craft that combines material and Mod Podge. Adults.

*Franklin Library*  337-828-5364

**Tuesday, November 12**  
**ALSC Justice Bus** 9:00 AM-12:00 PM  
Stop and tour the Justice Bus for a legal presentation on housing issues. Adults.

**Wednesday, November 13**  
**Diabetes Awareness w/ Dr. Victor Jackson** 6:00 PM  
In honor of National Diabetes Awareness Month, Dr. Victor Jackson with Teche Action Clinic presents an insightful demonstration on diabetes. Ready to educate our community on its causes and treatment options, Dr. Jackson will offer essential information you can share with others. Adults.

**Saturday, November 16** *\*Registration Required\**  
**Pumpkin Bread Workshop** 11:00 AM  
Learn how to make tasty, delicious pumpkin bread for the holiday season! This easy recipe is delicious, and bursting with fall flavors! Adults.





# Adult Programs

**Franklin Library** 337-828-5364

**Saturday, December 7**  
**Holiday Watercolors** 11:00 AM  
 Getting into the holiday spirit is easy with a paintbrush in hand! Watercolor painting offers a perfect way to capture the joy, warmth, and magic of the holiday season. Create holiday gift tags, festive cards, or personalized gifts for your loved ones. Adults.

**Wednesday, December 11**  
**Gift Wrapping Workshop** 10:15 AM-4:15 PM  
 Get a head start on holiday gift wrapping! The gift wrapping workshop offers wrapping paper, bows and gift tags for you to use, just bring your gifts! Adults.

**Patterson Branch** 985-395-2777

**Saturday, November 23**  
**Friendsgiving Brunch** 10:00 AM  
 Gather together for a Friendsgiving Brunch! Bring brunch finger foods to share as we unwind, enjoy tasty bites, and play games for a well-deserved break before the whirlwind of the holiday season begins. Adults.

**Friday, November 15**  
**ALSC Justice Bus** 10:00 AM-2:00 PM  
 Stop and tour the Justice Bus for a legal presentation on housing issues. Adults.

**Saturday, December 21**  
**Holiday Ornament** 10:00 AM  
 Come and create ornaments while enjoying cookies and cocoa to add to the holiday cheer! Adults.

**West End Branch** 337-923-6205

**Friday, November 1 & 15**  
**Friday, December 6 & 20**  
**Intro to Spanish** 11:00 AM  
 Join us for a beginners class to learn how to speak Spanish! Adults.

**Monday, November 4**  
**ALSC Justice Bus** 9:00 AM-12:00 PM  
 Stop and tour the Justice Bus for a legal presentation on housing issues. Adults.

**Monday, November 4,11,18,25**  
**Monday, December 2,9,16,23,30**  
**Art Workshop** 1:30 PM  
 The weekly art workshop is open to artists of all levels to explore painting, drawing, and mixed media. It offers a space for sharing ideas, inspiration, and techniques while connecting with a community of art enthusiasts. Adults.

**Saturday, November 9**  
**Saturday, December 7**  
**Embroidery 101** 10:00 AM  
 Learn the basics of embroidery such as selecting fabric and threading needles. Adults.

**Wednesday, November 20** *\*Registration Required\**  
**Pumpkin Bread** 1:30 PM  
 Discover how to make delicious pumpkin bread for the holidays with this easy recipe, full of fall flavors! Adults.

**Wednesday, December 11** *\*Registration Required\**  
**Banana Bread** 1:30 PM  
 Discover the art of making delicious banana bread. Adults.





# Book Clubs

## Adult Book Club



*Berwick Branch*  
Meets last Wednesday of every month  
2:00 PM

**November 20-** Mad Honey by Jodi Picoult  
**December 18 -** Bear Town by Fredrik Backman

*Centerville Branch*  
Meets 3rd Tuesday of every month  
10:30 AM

**November 19-** The Maid by Nita Prose  
**December 17-** A Christmas Memory by Richard Paul Evans

*Franklin Branch*  
Meets 2nd Thursday of every month  
4:00 PM

**November 14-** The Lost Apothecary by Sarah Penner  
**December 12-** Christmas Jars by Jason F. Wright

*West End Branch*  
Meets 1st Thursday of every month  
1:00 PM

**November 7-** Then She Was Gone by Lisa Jewell  
**December 5-** Winter Street by Elin Hilderbrand



## Youth Book Club

*Berwick Branch*  
Grades 4-8  
Meets last Thursday of every month  
4:00 PM

**November 21-** Ghosts by Raina Telgemeier  
**December 19-** The School for Good and Evil by Soman Chainani

*Patterson Branch*  
Grades 6-12  
Meets 3rd Thursday of every month  
4:00 PM

**November 21-** The Alchemist by Michael Scott  
**December 19-** Legend by Marie Lu

*West End Branch*  
Grades 9-12  
Meets 1st Thursday of every month  
5:00 PM

**November 7-** A Good Girl's Guide to Murder by Holly Jackson  
**December 5-** Rewind by Carolyn O'Doherty







## *in loving memory*

### **-Gretchel A. Porche**

*Ultimate Travel Guide To Gulf Shores,  
Alabama: Plan Your Perfect Getaway:  
Make Your Vacation Dreams a Reality!*

Donor: Jamie & Jimmy Chauvin

### **-Yvonne H. Roy**

*Cooking in Real Life: Delicious & Doable  
Recipes for Every Day by Lidey Heuck*

Donor: Jamie & Jimmy Chauvin

### **-Susan Crawford Patout**

*Ackley and Ladwig's Nursing Diagnosis  
Handbook: An Evidence-Based Guide to  
Planning Care by Mary Beth Flynn Makic*

*Being Mortal: Medicine and What Matters  
in the End by Atul Gawande*

Donor: Franklin Fortnightly



---

## **DONATIONS**

### **-Roxie Day**

*Hardcover Book*

### **-Suzanne E. Wiltz**

*Hardcover Book*

### **-Sheryl Landry**

*Hardcover Books*



The Library's Memorial program is a special way to remember loved ones and friends who have passed away. Patrons may donate funds to purchase library books in someone's memory while making general suggestions regarding the subject or genre. Materials are selected and bought by the acquisitions department. A memorial plaque is placed in the book and after processing, the donor and the honoree's family are notified. Direct donation of actual materials is discouraged as these are often not in compliance with the collection selection policy. For more information, please contact your local library.



St. Mary Parish Library  
206 Iberia Street  
Franklin, LA 70538

## Upcoming Library Closures

|                    |                       |
|--------------------|-----------------------|
| Staff Training Day | November 8            |
| Thanksgiving       | November 28-30        |
| Christmas          | December 24-26        |
| New Year's         | December 31-January 1 |



### Main Library—Alex P. Allain

206 Iberia St  
Franklin, LA 70538  
Phone 337-828-5364  
Fax 337-413-0145  
Mon-Fri 8:30 AM-5:30 PM  
Sat 9:00 AM-1:00 PM

### Library Headquarters

206 Iberia St  
Franklin, LA 70538  
Phone 337-828-1624  
Fax 337-828-2329  
Mon-Fri 8:00 AM-4:00 PM  
Sat Closed

### Amelia Branch

625 Lake Palourde Rd  
Amelia, LA 70340  
Phone 985-631-2262  
Fax 985-631-2632  
Mon-Fri 9:30 AM-5:30 PM  
Sat Closed

### Bayou Vista Branch

1325 Belleview Dr  
Bayou Vista, LA 70380  
Phone 985-399-9866  
Fax 985-399-4232  
Mon-Fri 8:30 AM-5:30 PM  
Sat 9:00 AM-1:00 PM

### Berwick Branch

3512 Fifth St  
Berwick, LA 70342  
Phone 985-385-2943  
Fax 985-385-6474  
Mon-Fri 8:30 AM-5:30 PM  
Sat 9:00 AM-1:00 PM

### Centerville Branch

9340 Hwy 182  
Centerville, LA 70522  
Phone 337-836-1717  
Fax 337-836-1718  
Mon-Fri 9:30 AM-5:30 PM  
Sat Closed

### Patterson Branch

521 Catherine St  
Patterson, LA 70392  
Phone 985-395-2777  
Fax 985-399-4469  
Mon-Fri 8:30 AM-5:30 PM  
Sat 9:00 AM-1:00 PM

### West End Branch

100 Charenton Rd  
Baldwin, LA 70514  
Phone 337-923-6205  
Fax 337-923-4507  
Mon-Fri 8:30 AM-5:30 PM  
Sat 9:00 AM-1:00 PM

## JUSTICE BUS

### Housing Legal Issues

The Acadiana Legal Service Corporation Justice Bus makes a visit to St. Mary Parish Library! Learn about ALSC and housing legal issues you may face. While resources are available, this is a presentation, not legal advice. For detailed assistance, contact their offices or visit [www.la-law.org](http://www.la-law.org) to apply online.

**November 4**  
West End Branch 9:00 AM-12:00 PM

**November 12**  
Franklin Library 9:00 AM-12:00 PM  
Berwick Branch 1:00 PM-3:00 PM

**November 15**  
Patterson Branch 10:00 AM-2:00 PM

**November 18**  
Bayou Vista Branch 9:00 AM-12:00 PM  
Centerville Branch 1:00 PM-3:00 PM

## Follow Us on Social Media

- on Facebook @StMaryPL
- on Instagram @stmaryparishlibrary
- on YouTube @St.MaryParishLibrarySystem

Get Connected for Our Latest News & Updates